

**EXCEPTIONAL PRESS RELEASE - FOR IMMEDIATE DISTRIBUTION**

**AUCTION SALE ON 23 OCTOBER 2017 AT DROUOT IN PARIS**

# AGUTTES

## **A LUMINOUS FIND SHINES LIGHT ON A UNIQUE FACET OF THE WORK OF PICASSO & MALHERBE FROM THE L. JOSEPHSON COLLECTION**

An artwork of the rare gemmail technique, made by Roger Malherbe-Navarre at the Malherbe Studio and signed by Pablo Picasso in 1956, will be offered at auction at Drouot in Paris by Aguttes auction house on 23 October 2017.

The work is one of the fifty works shown in the Retrospective *Picasso en gemmail* held in Paris, in 1957.



© Aguttes

# AGUTTES

## A LUMINOUS FIND SHINES LIGHT ON A UNIQUE FACET OF THE WORK OF PICASSO & MALHERBE FROM THE L. JOSEPHSON COLLECTION



© 2017 Estate of Pablo Picasso

Related artwork: Pablo Picasso, *Guitare*, 1924. Painting in the collection of the Stedelijk Museum Amsterdam.



© Aguttes

### THE ARTWORK

*Guitare 1924-1957* is one of the fifty gemmaux exhibited during the *Picasso en gemmaux* exhibition that was held on Rue du Faubourg-Saint-Honoré in Paris in 1957. In the late 1950s, Roger Malherbe explored the technique of gemmail (from the French words for gem and enamel) alongside Picasso, Braque and Cocteau. Impressed with this new medium and the unprecedented promise of being able to illuminate his talent, Picasso gave the gemmiste Roger Malherbe-Navarre permission to transpose in glass and light sixty iconic artworks of his that he had painted since 1900. Picasso signed these gemmaux. After the Retrospective in Paris, there were exhibitions across the world, including at the Metropolitan Museum of Art, the Corning Glass Museum, Galerie Charpentier, and Monaco.

The exhibitions were a great success and marked by the fervor of prime members of society, including the royal family of Monaco, the Queen of England and her family, the royal family of Belgium, as well as Coco Chanel, Yves Saint Laurent, Jacques Cartier, Edith Piaf, Pierre Cardin, Elizabeth Arden, Marlene Dietrich, and Francine Weisweiler. Certain works were acquired by Raymond Loewy, Stanley Marcus, Nelson Rockefeller, Prince Rainier of Monaco, the Rothschild family, and the Weisweillers. Certain works were the Emperor of Japan, Raymond Loewy, Stanley Marcus, Nelson Rockefeller, Prince Rainier of Monaco, the Rothschild and the Weisweiler families. An interpretation of the painting *Guitar* of 1924, the composition we are presenting, which was executed in 1956, illustrates the unique capacity of gemmail to make light become a full part of the new artwork. Indeed, in passing through the glass light breathes a fresh life into the painter's palette, adds warmth to the vivid colors and makes blue, Picasso's cherished color, regain its primary splendor. With its pigments set aflame, the composition's full splendor appears as the perfect materialization of the 1924 painting subject.

The angular outlines of the artist's drawing resonate with the coarse projections of glass, the juxtaposed fragments of which amplify the impression of a crystal camaïeu. Contrary to Braque's gemmaux, which consisted of pieces of glass that were identical in size and shape, Roger Malherbe for Picasso here employed an infinite number of diverse shards which he superimposed in layers of varying thickness in order to create an appealing artwork that abounds in nuances. An intricate interplay of shapes, materials and colors, this gemmail is among those that will make you exclaim like Picasso, «A new art is born: the gemmaux».





# AGUTTES

## A LUMINOUS FIND SHINES LIGHT ON A UNIQUE FACET OF THE WORK OF PICASSO & MALHERBE FROM THE L. JOSEPHSON COLLECTION

“ **A** calling is that irresistible urge which enables us to overcome any obstacle, so great is the desire to fully achieve one’s raison d’être.”

Léon Josephson, 1963

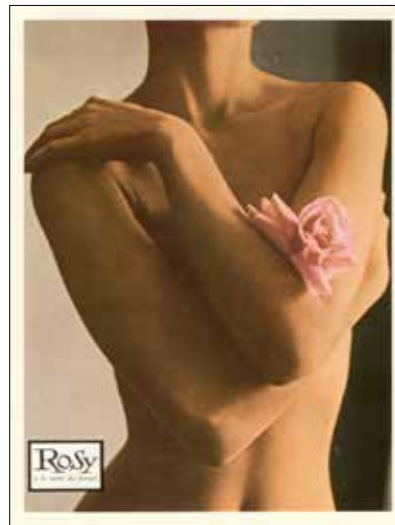
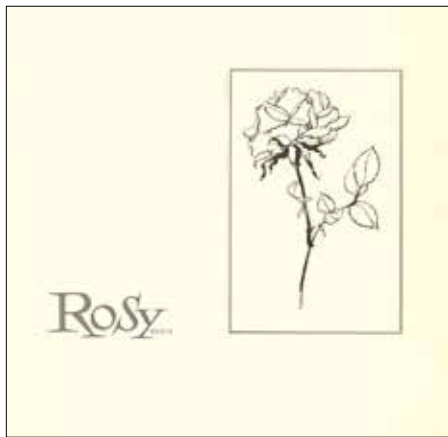


### THE COLLECTOR

Léon Josephson, a Parisian industrialist, successfully launched the lingerie brand Rosy after the war, thereby contributing to the emancipation of women. He boldly broke advertising norms in 1963 with the landmark advertisement “Woman with a Rose”.

A lover of the arts, he already began collecting not only the masters of Impressionism but also modern art and the School of Paris in the 1950s. Eclectic and personal, his collection was a vibrant homage to twentieth century painting.

In 1960, he acquired the Guitar gemmail from Roger Malherbe-Navarre. It remained in the family since then.



“Woman with a Rose”, Photograph by Jean-Loup Sieff used for the celebrated ad of the Rosy brand in 1963  
© Wolf Lingerie SAS  
© Jean-Loup Sieff

© Wolf Lingerie SAS



# AGUTTES

## A LUMINOUS FIND SHINES LIGHT ON A UNIQUE FACET OF THE WORK OF PICASSO & MALHERBE FROM THE L. JOSEPHSON COLLECTION



Pablo Picasso writing, "A new art is born: Gemmaux."

« Picasso achieved the miracle that all glassmakers had vainly desired. He seized the unseizable: light, pure and straight from its source, modelled and refracted through thousands of gems constituting the created works.

Enthused by the material's rich nature, Picasso undertook a unique attempt for a painter: transposing his painted works in Gemmaux, executed millimeter by millimeter to transform his artwork with unparalleled precision in a completely new form of expression »

Jean Bouret, Picasso transposé en gemmaux, in Les Lettres Françaises, March 1957



Pablo Picasso signing one of his gemmaux in the presence of Roger Malherbe-Navarre

© Succession Picasso 2017

© Succession Picasso 2017



Jean Cocteau, Picasso, my master Press clipping, 1957



# AGUTTES

## A LUMINOUS FIND SHINES LIGHT ON A UNIQUE FACET OF THE WORK OF PICASSO & MALHERBE FROM THE L. JOSEPHSON COLLECTION

© Succession Picasso 2017  
© Galerie Charpentier



Poster of the exhibition "Braque, Picasso, Rouault and Contemporary Masters of the Gemmail Museum in Tours", Galerie Charpentier, Paris, 1964.

© Succession Picasso 2017



Gemmail entitled Self-portrait presented as No. 1 in the exhibition



Poster of the retrospective exhibition Picasso en Gemmaux, 1900-1957 with 50 gemmaux by Picasso, held by Atelier Malherbe on Rue du Faubourg St Honoré in Paris, March-April-May 1957. Our work was presented as No. 39 in the exhibition.

### INTRODUCTION

VOICI nos Gemmaux qui représentent nos efforts, nos soucis et nos tâtonnements.

Une pensée, d'abord, pour Jean CROTTI, l'inventeur qui a usé ses yeux vingt ans, en cherchant cette technique et que beaucoup oublient devant le succès de dernière heure.

Une pensée aussi pour Roland MALHERBE, mon Fils, qui a trouvé le procédé chimique qui la rendra inaltérable et présente dans les siècles à venir.

Merci à Pablo PICASSO qui nous a aidé à interpréter sa pensée et dont nous avons la fierté de vous présenter la rétrospective.

Merci à Georges BRAQUE qui disait l'autre jour à des journalistes : « Si j'avais 30 ans, je serais le gemmiste BRAQUE. Ces gemmaux magnifient ma pensée. »

Merci à Jean COCTEAU qui a créé pour nous et nous a tant encouragé.

Un souvenir ému à MATISSE qui a signé avant de mourir les premiers Gemmaux.

Merci à ROUAULT pour son "Pierrot Sage".

Merci à tous les grands artistes contemporains qui nous ont prêté leur concours et ont salué ce nouveau mode d'expression.

Devant une matière aussi vivante j'attire votre attention sur une chose importante :

Les Gemmaux sont des interprétations de la pensée des peintres. Ces pièces uniques, transcrites dans un autre registre, n'ont aucun rapport avec des reproductions.

Le temps est venu où gemmistes et artistes vont créer directement pour le Gemmail. Plusieurs de ces créations existent déjà dans notre exposition.

Merci à mes gemmistes qui m'ont aidé pour vous présenter ce spectacle de joie et de lumière.

**Roger MALHERBE-NAVARRÉ,**  
Maître d'Œuvre

Introduction to the catalogue of the retrospective *Picasso en Gemmaux* by Roger Malherbe Navarre, 1957.





## AGUTTES

## A LUMINOUS FIND SHINES LIGHT ON A UNIQUE FACET OF THE WORK OF PICASSO &amp; MALHERBE FROM THE L. JOSEPHSON COLLECTION

FROM THE COLLECTION  
OF LÉON JOSEPHSON

50

PABLO PICASSO (1881-1973)  
AND ROGER MALHERBE-NAVARRE  
(1908-2006)*Guitare, 1924 -1956*

Gemmail made in 1956 as a transfiguration of the 1924 painting *Guitare*. A unique work, signed Picasso in the lower right and executed at Atelier Malherbe by Roger Malherbe-Navarre.

101.5 x 131 cm – 40 x 51.5 in.

The work's certificate written by Roger Malherbe-Navarre (founder of the Malherbe Studio for gemmail) which entitles it *Nature morte à la mandoline* (Still life with a mandolin) will be given to the buyer.

## PROVENANCE

Atelier Roger Malherbe (Paris)  
Léon Josephson collection  
(Neuilly-sur-Seine)  
Acquired c.1960 and in the family  
since then.

## EXHIBITIONS

Picasso en Gemmaux, 1900-1957 exhibition by Atelier Malherbe featuring 50 gemmaux signed by Picasso from 1956 to 1957 on Rue du Faubourg St Honoré in Paris, March-April-May 1957. Number 39 in the exhibition.

**Contrary to custom,  
there is no estimate for this lot.**

When an estimate is provided, it has been based on past auction results of comparable objects.

In the present instance, the scarce availability of this type of works in auctions has not enabled reliable estimates. Should you require further information it will be best if you contact the auction organizers directly.



© Aguttes

## BIBLIOGRAPHY

*Rétrospective : Picasso en Gemmaux, 1900-1957*, Atelier Malherbe (1957). Catalogue de l'exposition de l'Atelier Malherbe qui présenta 50 des gemmaux signés par Picasso entre 1956 et 1957, rue du Faubourg St Honoré, Paris, mars-avril-mai 1957. N°39 du catalogue, non repr.

Christian Zervos, *Pablo Picasso, vol 5, œuvres de 1923 à 1925*, Edition Cahiers d'Art Paris (1952). Toile en rapport reproduite sous le titre « Guitare » (peinte en 1924 et mesurant 97 x 130 cm) repr. n° 224 p109.  
Josep Palau i Fabre, *Picasso des ballets au drame (1917-1926)*, Könemann (1999). Toile en rapport reproduite sous le titre « Mandoline sur une table, Juan-les-pins, été 1924 », repr. n°1480 p416.  
*Catalogue du Salon d'automne 1991 [...] Picasso et le Gemmail*, Grand Palais, Paris, exposition du 19 octobre au 3 novembre 1991, Association du Salon d'automne (1991): textes pages 30 et 33 et deux gemmaux signés Picasso en rapport reproduits p.31 et 32.

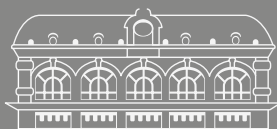
*Le gemmail : miracle de lumière et d'amour, un art nouveau est né*, Musée du gemmail de Tours (circa 1971). Un gemmail signé Picasso en rapport intitulé « Enfant malade » reproduit.

Maurice Tournade, *Le gemmail, chemin de lumière*. Edition de la Nouvelle République (1990). Deux gemmaux signés Picasso en rapport reproduits.

*Les gemmaux de France : nouveau mode d'expression créée par Jean Crotti [...] Galerie d'art de la lumière, Paris (1956)* : textes et l'« Autoportrait » en gemmail signé Picasso reproduit.

Galerie Charpentier, *Documents autour de l'exposition «Braque, Picasso, Rouault et Maîtres contemporains du Musée du Gemmail de Tours»* (1964) : textes et plusieurs gemmaux en rapport signés Picasso reproduits dont l'« Arlequin », « Nature morte à la tête de mort », « Nature morte au pot jaune » ou encore « Nature morte au bucrâne ».

*Le gemmail : art de lumière, expression du XX<sup>e</sup> siècle*, Musée du gemmail (2002) : plusieurs gemmaux en rapport signés Picasso reproduits dont « Nature morte à la tête antique », « Femme assise dans un fauteuil » ou encore « Les adolescents ».





## HEAD OF MODERN // CONTEMPORARY ART DEPARTMENT

Charlotte REYNIER-AGUTTES • reynier@aguttes.com • +33 1 41 92 06 49

### PRESS CONTACTS

At DROUOT : Mathilde FENNEBRESQUE • mfennebresque@drouot.com • +33 1 48 00 20 42

At AGUTTES : Sébastien FERNANDES • fernandes@aguttes.com • +33 1 47 45 93 05

